



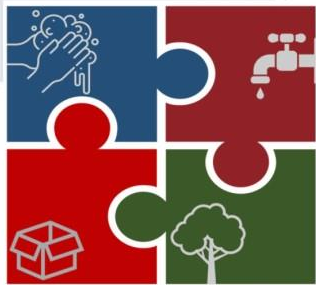
# WaSH LRC

## Disaster Management Sector



# WaSH Objectives

- Reduction of deaths resulting from water-related diseases
- To allow people to live with good health, dignity, comfort and security.



# WaSH Interventions



**Excreta management**



**WASH in diseases outbreaks**



**Water supply**



**Hygiene promotion**



**Solid waste management**



**Vector control**



# WaSH in Schools

With the MEHE collaboration we assist vulnerable schools across Lebanon by rehabilitating the toilet, sinks and drinking water stations



# WaSH in PHCs Primary Health Care centers

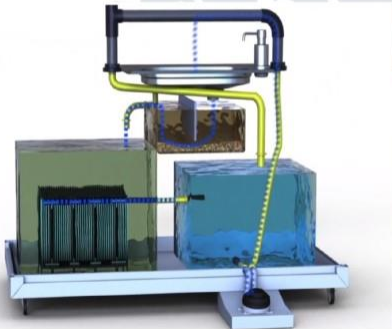
Renovating and upgrading the water and sanitation infrastructures



# WaSH in Host Community

## Gravit'eau

Ecofriendly  
Self sufficient  
Innovative  
Safe water  
Adaptable



Handwashing Station



# WaSH in Host Community

Install valves and connections to control the flow of water



Valves and connections installation to control manual batch chlorination in Btermaz-North Lebanon serves 250HH



# WaSH in Host Community

Install a solar system to operate the water pumping stations to provide continuous water supply



Solar panels installed – Hadath Jebbi (North)  
Serves 4000 individuals



Solar panels installed - Beit Al Faqs (North)  
Serves 400 HH





# WaSH in Host Community

Install a solar system to generate electricity to light the grounds and the WASH facilities of Saida stadium



Solar panels installed – Saida Stadium



# WaSH in ITSS

Informal Tented Settlements

## Supporting Syrian refugees



# WaSH during Emergencies and Outbreaks

Support communities during COVID-19 and Cholera outbreaks





# Thank you!

